

vFoglight™

Bringing Clarity to VM Management

vFoglight helps you manage performance, measure capacity and perform chargeback for virtual and physical infrastructures

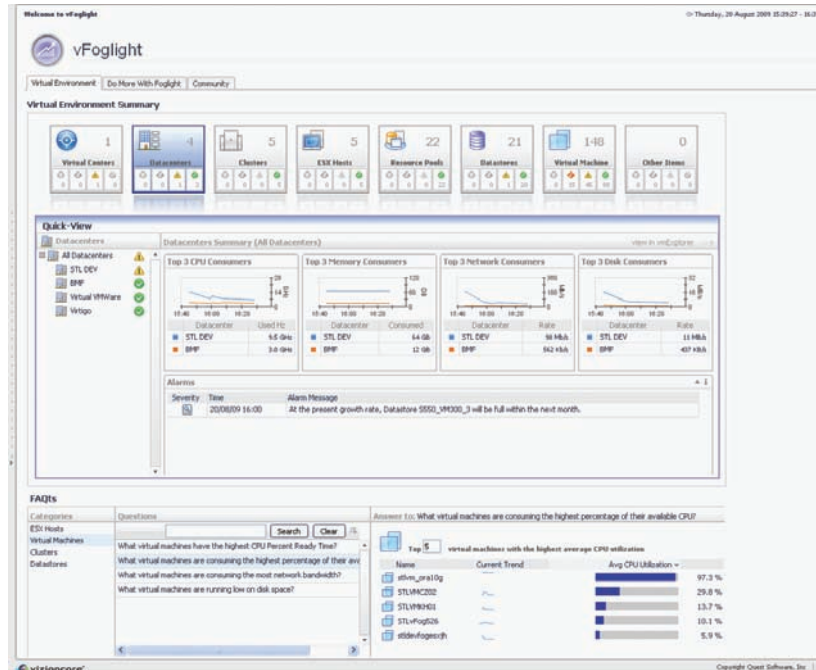
vFoglight is a best-in-class virtualization management solution that provides performance monitoring, capacity planning, chargeback, and service management to help organizations mitigate the impact of resource sharing and support key business objectives.

With vFoglight, administrators can visualize the entire infrastructure through detailed architectural representations and leverage out-of-the-box alerts and expert advice to detect, diagnose and resolve problems affecting performance and availability. Scenario-based models and predictive alerts also help organizations plan, manage and optimize infrastructure capacity, improving performance and resource utilization. Additionally, vFoglight uses industry chargeback models to help track infrastructure utilization, enabling costs to be recovered for the services provided. And with built-in service dependency models, vFoglight let's administrators define SLA achievement and proactively monitor service health and availability.

vFoglight is offered in two editions, vFoglight™ SE (Standard Edition), which offers best-in-class monitoring for your virtual infrastructure, and vFoglight™ Pro, which offers all the features of vFoglight SE plus new advanced features designed to raise the bar for virtual and physical server monitoring.

vFoglight SE includes all of the following features:

Detailed Architectural Representations – Understand the virtual infrastructure through clear, high-level visual representations which include color coding and movements to focus attention on problem areas. This helps administrators to quickly identify problems occurring in the virtual infrastructure to speed problem diagnosis and resolution.



TECHNICAL DATA SHEET



vizioncore™

vFoglight has the following system requirements and technical specifications:

Operating System:
Windows Server 2003

Hardware Platform:
x86 and x64

Database Repository:
Embedded MySQL Database;
Options include an external MySQL Database (5.0.27 or greater) or Oracle (9.2.x or 10.2.x), SQL Server 2003 and 2008

Virtual Center:
2.0x and 2.5x,
and vSphere 4.0

Web Browser:
Internet Explorer 6/7,
Firefox 2

Guest Process Investigation – Drill-down into the processes running within VMs to understand internal performance and resource utilization. This helps administrators to quickly determine which processes are impacting VM performance or which VMs are utilizing resources ineffectively.

Out-of-the Box Alerts with Expert Advice – Detailed alarms covering best practices, future predictions, deviations from normal activity and specific operational problems. Accurately diagnose the root-cause of incidents and problems and speed mean-time-to-resolution.

Asset and Configuration Tracking – Track the movement of virtual machines and changes to their configurations from one physical server to another, while correlating the impact that those changes may have on the performance and availability of applications and services, as well as on other virtual machines.

Workload Migration Modeling – Show the resource impact of moving a virtual machine from one physical system to another to determine if planned moves will have unfavorable impact on resources and services.

Resource Utilization Management – Gather and summarize performance and utilization data at all levels of the virtual infrastructure to identify capacity issues, underutilized capacity and predict underutilization.

Multiple Virtual Center Management – Visualize multiple virtual centers using a single screen to proactively understand the entire virtual infrastructure while reducing administration costs and minimizing risk.

Reporting – Provides out-of-the-box reports for capacity, performance, asset tracking, provisioning trends and infrastructure events. This helps administrators to communicate current and available capacity, virtual machines that require attention, plan and prioritize performance and availability enhancements, and understand changes to infrastructure assets.

vFoglight Pro includes all of the features found in vFoglight SE, plus:

Chargeback – Provides the ability to allocate costs for the use of infrastructure to hosts or groups of hosts, whether they are physical or virtual, and using industry-standard chargeback models. This helps administrators provides cost transparency to IT management and business stakeholders that indicate what groups and workloads are consuming resources and allowing costs to be recovered proportionately.

Service Management – Group virtual machines and infrastructure components into services and use those services to record status and availability, perform chargeback, and report KPI, SLO and SLA information. This helps to better align IT and the business by measuring service levels, perform chargeback and report key information to stakeholders.

Capacity Planning - Plan, manage and optimize infrastructure capacity for improved performance and better resource utilization.

Third-Party Integration – Receive alerts from third-party technology monitoring system and also forward alerts from vFoglight to third-party systems, bringing new efficiency and awareness to virtualization administrators.

Physical Operating System (OS) Monitoring – Extend visibility into the physical infrastructure by monitoring Memory, CPU, Disk I/O and Network I/O, including color coding and movements to focus attention on problem areas. This helps IT to visualize key performance and capacity in the physical infrastructure and help isolate the root-cause of problems.

General Purpose Monitoring – Extends monitoring to infrastructure and application components not covered by specific agents to provide greater coverage of the infrastructure and applications.



2300 Barrington Rd.
Suite 700
Hoffman Estates, IL 60169
USA

International Phone: +1 847-589-2222
Toll-Free U.S. Phone: 866-260-2483
Fax: 847-279-1868
www.vizioncore.com

Printed in USA
08196
REV 11/18/09